

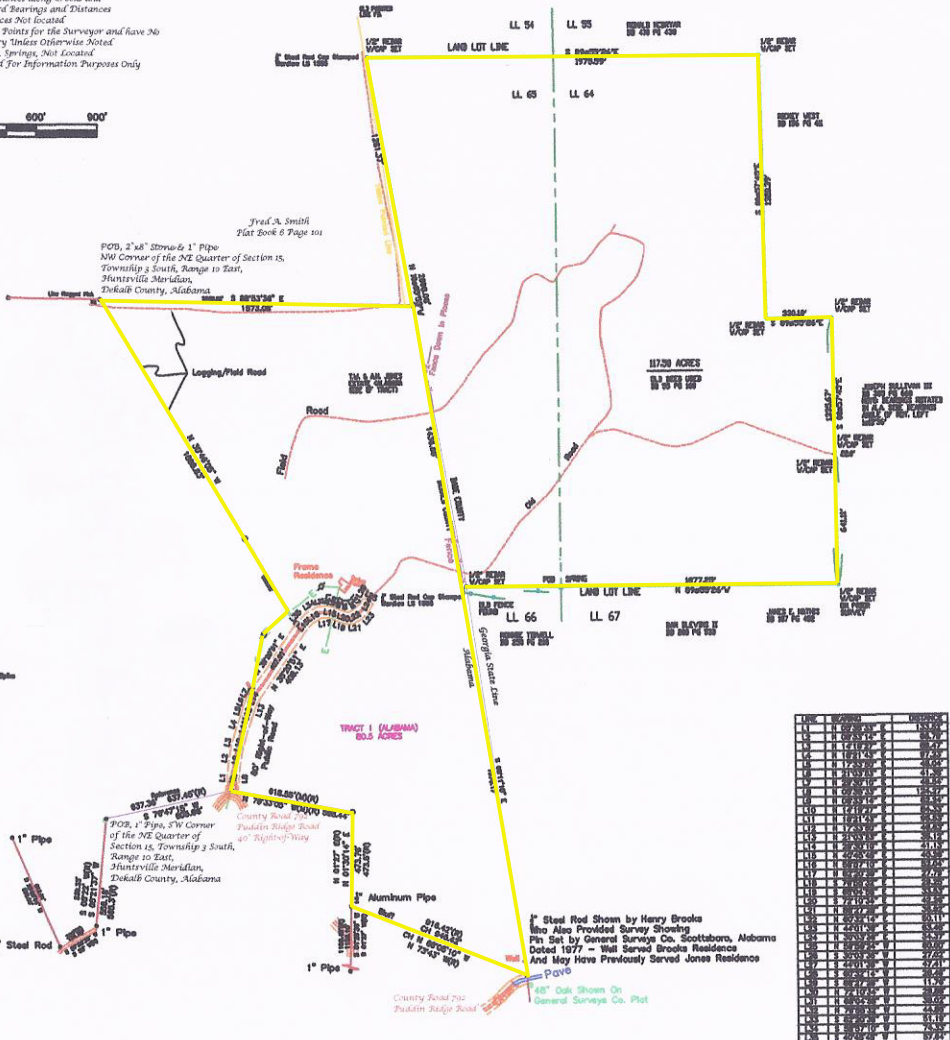


Referenced to Deed Book 896 Page 81
 Other Sources Deed Book 197 Page 184, Deed Book 728 Page 240, Deed
 Book 368 Page 242, Deed Book 740 Page 273
 All Bearings and Distances along Cords and
 Right-of-Ways are Closed Bearings and Distances
 Interior Jones Not Located
 Walls with Flagging are Reference Points for the Surveyor and Have No
 Relation to the Boundary Unless Otherwise Noted
 Stairs, Barns, Wells, Springs, Not Located
 Partial Improvements Located For Information Purposes Only



LEGEND

- 1/4" Steel Rod Found (Unless Otherwise Noted)
- 1/4" Steel Rod Not Found (Unless Otherwise Noted)
- 1/4" Steel Rod Not Found (Unless Otherwise Noted) (Pin Set in Ground)
- POB Point of Beginning
- POC Point of Closing
- GO Ground
- RD Road
- S- Overhead Utilities
- U Utility Pole
- Line Not to Scale



LINE	BEARING	DISTANCE
1	N 89° 03' 30" E	1873.00'
2	S 89° 03' 30" E	1873.00'
3	S 89° 03' 30" E	1873.00'
4	S 89° 03' 30" E	1873.00'
5	S 89° 03' 30" E	1873.00'
6	S 89° 03' 30" E	1873.00'
7	S 89° 03' 30" E	1873.00'
8	S 89° 03' 30" E	1873.00'
9	S 89° 03' 30" E	1873.00'
10	S 89° 03' 30" E	1873.00'
11	S 89° 03' 30" E	1873.00'
12	S 89° 03' 30" E	1873.00'
13	S 89° 03' 30" E	1873.00'
14	S 89° 03' 30" E	1873.00'
15	S 89° 03' 30" E	1873.00'
16	S 89° 03' 30" E	1873.00'
17	S 89° 03' 30" E	1873.00'
18	S 89° 03' 30" E	1873.00'
19	S 89° 03' 30" E	1873.00'
20	S 89° 03' 30" E	1873.00'
21	S 89° 03' 30" E	1873.00'
22	S 89° 03' 30" E	1873.00'
23	S 89° 03' 30" E	1873.00'
24	S 89° 03' 30" E	1873.00'
25	S 89° 03' 30" E	1873.00'
26	S 89° 03' 30" E	1873.00'
27	S 89° 03' 30" E	1873.00'
28	S 89° 03' 30" E	1873.00'
29	S 89° 03' 30" E	1873.00'
30	S 89° 03' 30" E	1873.00'
31	S 89° 03' 30" E	1873.00'
32	S 89° 03' 30" E	1873.00'
33	S 89° 03' 30" E	1873.00'
34	S 89° 03' 30" E	1873.00'
35	S 89° 03' 30" E	1873.00'
36	S 89° 03' 30" E	1873.00'
37	S 89° 03' 30" E	1873.00'
38	S 89° 03' 30" E	1873.00'
39	S 89° 03' 30" E	1873.00'
40	S 89° 03' 30" E	1873.00'
41	S 89° 03' 30" E	1873.00'
42	S 89° 03' 30" E	1873.00'
43	S 89° 03' 30" E	1873.00'
44	S 89° 03' 30" E	1873.00'
45	S 89° 03' 30" E	1873.00'
46	S 89° 03' 30" E	1873.00'
47	S 89° 03' 30" E	1873.00'
48	S 89° 03' 30" E	1873.00'
49	S 89° 03' 30" E	1873.00'
50	S 89° 03' 30" E	1873.00'
51	S 89° 03' 30" E	1873.00'
52	S 89° 03' 30" E	1873.00'
53	S 89° 03' 30" E	1873.00'
54	S 89° 03' 30" E	1873.00'
55	S 89° 03' 30" E	1873.00'
56	S 89° 03' 30" E	1873.00'
57	S 89° 03' 30" E	1873.00'
58	S 89° 03' 30" E	1873.00'
59	S 89° 03' 30" E	1873.00'
60	S 89° 03' 30" E	1873.00'
61	S 89° 03' 30" E	1873.00'
62	S 89° 03' 30" E	1873.00'
63	S 89° 03' 30" E	1873.00'
64	S 89° 03' 30" E	1873.00'
65	S 89° 03' 30" E	1873.00'
66	S 89° 03' 30" E	1873.00'
67	S 89° 03' 30" E	1873.00'
68	S 89° 03' 30" E	1873.00'
69	S 89° 03' 30" E	1873.00'
70	S 89° 03' 30" E	1873.00'
71	S 89° 03' 30" E	1873.00'
72	S 89° 03' 30" E	1873.00'
73	S 89° 03' 30" E	1873.00'
74	S 89° 03' 30" E	1873.00'
75	S 89° 03' 30" E	1873.00'
76	S 89° 03' 30" E	1873.00'
77	S 89° 03' 30" E	1873.00'
78	S 89° 03' 30" E	1873.00'
79	S 89° 03' 30" E	1873.00'
80	S 89° 03' 30" E	1873.00'
81	S 89° 03' 30" E	1873.00'
82	S 89° 03' 30" E	1873.00'
83	S 89° 03' 30" E	1873.00'
84	S 89° 03' 30" E	1873.00'
85	S 89° 03' 30" E	1873.00'
86	S 89° 03' 30" E	1873.00'
87	S 89° 03' 30" E	1873.00'
88	S 89° 03' 30" E	1873.00'
89	S 89° 03' 30" E	1873.00'
90	S 89° 03' 30" E	1873.00'
91	S 89° 03' 30" E	1873.00'
92	S 89° 03' 30" E	1873.00'
93	S 89° 03' 30" E	1873.00'
94	S 89° 03' 30" E	1873.00'
95	S 89° 03' 30" E	1873.00'
96	S 89° 03' 30" E	1873.00'
97	S 89° 03' 30" E	1873.00'
98	S 89° 03' 30" E	1873.00'
99	S 89° 03' 30" E	1873.00'
100	S 89° 03' 30" E	1873.00'

1" Steel Rod Shown by Henry Brooks
 Also Also Provided Survey Showing
 Pin Set by General Surveys Co. Scottsboro, Alabama
 Dated 1977 - Well Served Brooks Residence
 And May Have Previously Served Jones Residence
 P.O. 10

48" Oak Shown On
 General Surveys Co. Plat