

STATE OF ALABAMA
COUNTY OF DEKALB

I, LARRY W. WALKER, A LICENSED PROFESSIONAL LAND SURVEYOR IN THE STATE OF ALABAMA, FOR LARRY WALKER LAND SURVEYING, INC., STATE THAT THIS IS A PLAT OF AN ACTUAL FIELD SURVEY OF TRACTS 1 THRU 7, INCLUSIVE OF "BATES PROPERTY", MORE PARTICULARLY DESCRIBED AS FOLLOWS:

BEGIN AT A 1/2" REBAR MARKING THE NE CORNER OF THE NE1/4-NW1/4 IN SECTION 7, T-9-S, R-8-E, THENCE S01°29'25"E 222.37' ALONG THE EAST LINE OF SAID FORTY TO A 1/2" REBAR CAPPEDC(A-497-LS), THENCE LEAVING SAID FORTY LINE S45°41'19"W 68.20' TO A 1/2" REBAR AT A FENCE CORNER, THENCE S04°05'58"E 1091.77' TO A 1" PIPE AT A FENCE CORNER MARKING THE SE CORNER OF SAID FORTY AND THE NE CORNER OF THE SE1/4-NW1/4 IN SAID SECTION 7, THENCE S00°03'31"W 619.62' ALONG THE EAST LINE OF SAID SE1/4-NW1/4 IN SAID SECTION 7 TO A 1/2" REBAR CAPPEDC(R.M. JONES), THENCE CONTINUE ALONG SAID FORTY LINE S00°02'54"W 698.23' TO A 3/4" PIPE AT A FENCE CORNER MARKING THE SE CORNER OF SAID FORTY, THENCE N89°29'38"W 649.87' TO A 1" PIPE AT A FENCE CORNER MARKING THE SW CORNER OF THE SW1/4-NW1/4 IN SAID SECTION 7 AND THE NE CORNER OF THE NE1/4-SE1/4 IN SECTION 12, T-9-S, R-7-E, THENCE ALONG THE EAST LINE OF SAID NE1/4-SE1/4 IN SAID SECTION 12, S00°19'12"E 1318.58' TO A 1" PIPE MARKING THE SE CORNER OF SAID FORTY, THENCE ALONG THE SOUTH LINE OF SAID FORTY N86°33'57"W 1327.24' TO A 2" PIPE MARKING THE SW CORNER OF SAID FORTY, THENCE ALONG THE WEST LINE OF SAID FORTY, THE FOLLOWING BEARINGS AND DISTANCES: N00°09'55"W 1009.41' TO A 3" PIPE IN A ROCK PILE, THENCE N00°11'27"W 222.66' TO A 1/2" REBAR CAPPEDC(DVDY) MARKING THE NW CORNER OF SAID FORTY, THENCE ALONG THE NORTH LINE OF SAID FORTY N89°41'55"E 922.78' TO A 1/2" REBAR CAPPEDC(DVDY), THENCE CONTINUE ALONG SAID FORTY LINE N89°41'33"E 55.70' TO A 1/2" REBAR CAPPEDC(A-497-LS) ON THE SOUTHEASTELY R/W OF DEKALB COUNTY ROAD #862 (60' R/W), THENCE LEAVING SAID FORTY LINE AND ALONG SAID R/W THE FOLLOWING BEARINGS AND DISTANCES: N33°44'25"E 144.98' TO A 1/2" REBAR CAPPEDC(A-497-LS), THENCE N31°10'05"E 183.60' TO A 1/2" REBAR CAPPEDC(A-497-LS), THENCE N29°04'35"E 191.82' TO A 1/2" REBAR CAPPEDC(A-497-LS), THENCE N35°22'58"E 81.25' TO A 1/2" REBAR CAPPEDC(A-497-LS), THENCE N43°41'46"E 34.01' TO A 1/2" REBAR CAPPEDC(A-497-LS) ON THE WEST LINE OF THE SW1/4-NW1/4 IN SAID SECTION 7, THENCE ALONG SAID FORTY LINE N00°21'42"W 1323.09' TO A NAIL IN A ROCK PILE MARKING THE NW CORNER OF SAID FORTY, THENCE S89°58'35"E 515.02' ALONG THE NORTH LINE OF SAID FORTY TO A 3/8" REBAR, THENCE LEAVING SAID FORTY LINE N48°05'59"E 1065.08' TO A 1/2" REBAR CAPPEDC(DVDY) ON THE WEST LINE OF THE NE1/4-NW1/4 IN SAID SECTION 7, THENCE N00°24'06"W 612.09' ALONG SAID FORTY LINE TO A 3/8" REBAR MARKING THE NW CORNER OF SAID FORTY, THENCE N89°40'43"E 1300.92' ALONG THE NORTH LINE OF SAID FORTY TO THE POINT OF BEGINNING, CONTAINING 164.32 ACRES MORE OR LESS.

LESS AND ACCEPT ANY PORTION LYING WITHIN THE R/W OF DEKALB COUNTY ROAD #862 (60' R/W) AND DEKALB COUNTY ROAD #22 (60' R/W).

I FURTHER STATE THAT THIS SURVEY AND PLAT MEETS THE CURRENT REQUIREMENTS OF THE STANDARDS OF PRACTICE FOR LAND SURVEYING IN THE STATE OF ALABAMA TO THE BEST OF MY KNOWLEDGE, INFORMATION AND BELIEF.

THIS THE 11TH DAY OF NOVEMBER, 2014

LARRY W. WALKER, PLS
ALABAMA LICENSE #21183.

THIS PROPERTY IS ORDERED BY THE CIRCUIT COURT OF DEKALB COUNTY, ALABAMA TO BE SOLD.

I, PAM SIMPSON, CIRCUIT CLERK, OF DEKALB COUNTY, ALABAMA, HEREBY APPROVE THIS PLAT FOR RECORDING, THIS THE _____ DAY OF _____, 2014.

PAM SIMPSON
CIRCUIT CLERK, DEKALB COUNTY, ALABAMA.

COUNTY ENGINEER

THE UNDERSIGNED, AS COUNTY ENGINEER FOR DEKALB COUNTY, ALABAMA, HEREBY CERTIFIES THE PROPOSED PLAT FOR THIS SUBDIVISION COMPLIES WITH CURRENT REQUIREMENTS FOR A MINOR SUBDIVISION.

DEKALB COUNTY ENGINEER _____ DATE _____

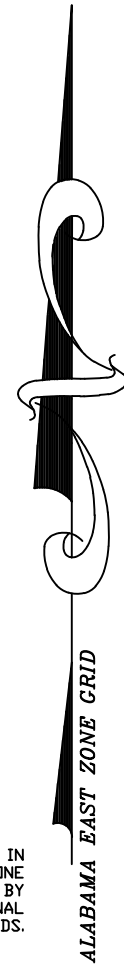
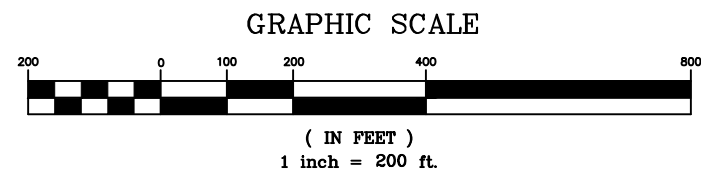
DEKALB COUNTY HEALTH DEPARTMENT:

TRACTS 1 THRU 6 CANNOT BE FURTHER SUBDIVIDED WITHOUT THE APPROVAL OF THE DEKALB COUNTY HEALTH DEPARTMENT.

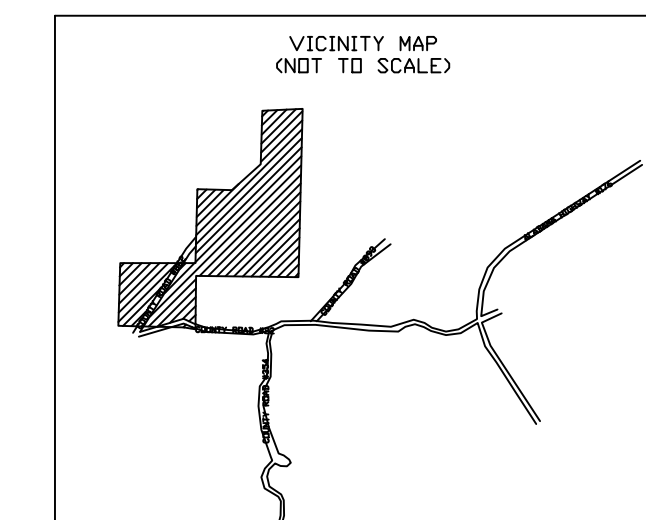
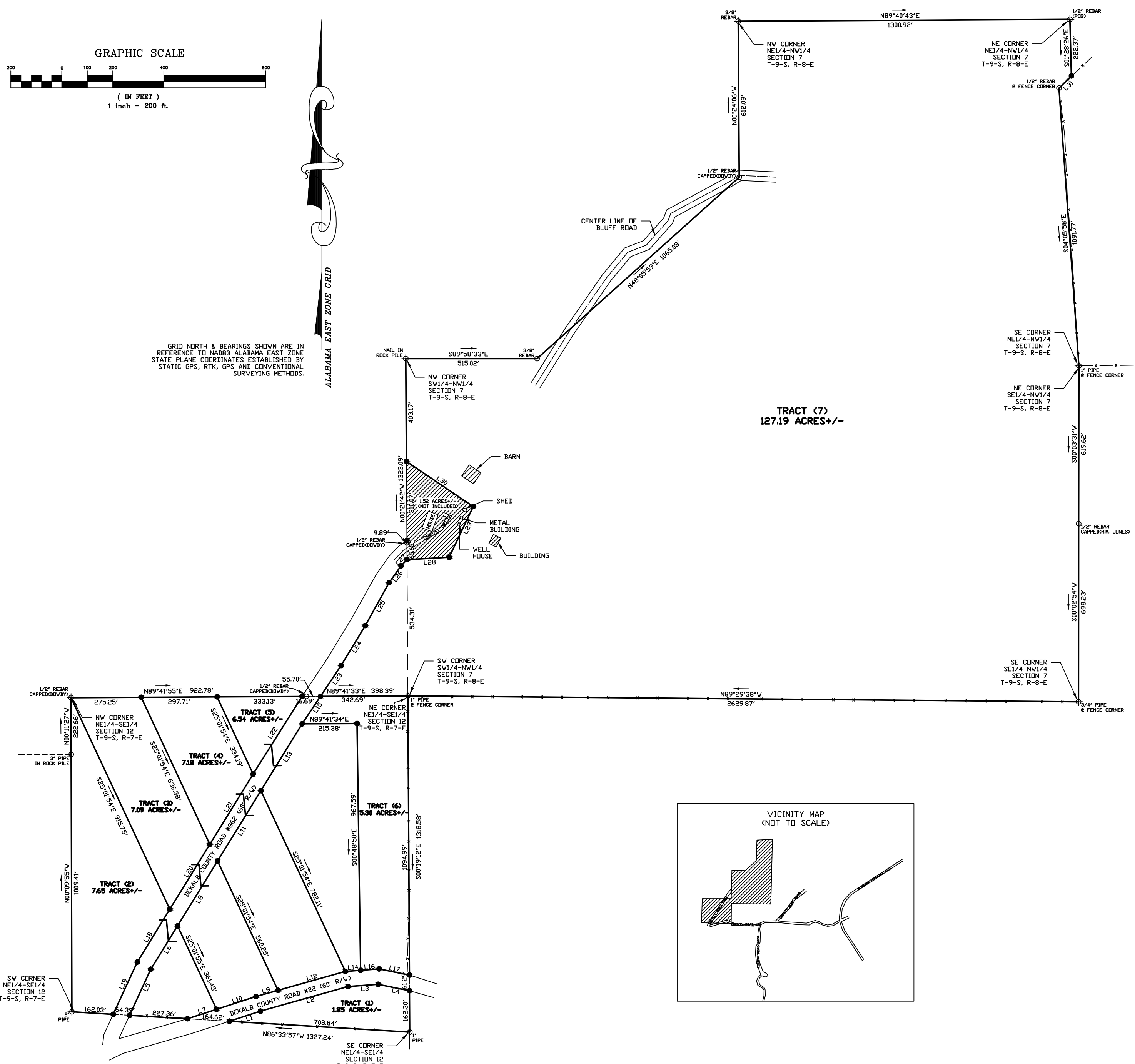
WADE BOBBO _____ DATE _____

| LINE | LENGTH | BEARING |
|------|---------|-------------|
| L1 | 128.15' | N72°03'32"E |
| L2 | 356.60' | N74°15'29"E |
| L3 | 118.47' | N85°49'32"E |
| L4 | 125.88' | S78°32'20"E |
| L5 | 198.70' | N24°43'13"E |
| L6 | 200.16' | N31°40'02"E |
| L7 | 120.00' | S72°03'32"W |
| L8 | 299.12' | N31°40'02"E |
| L9 | 89.82' | S74°15'29"W |
| L10 | 162.60' | S72°03'32"W |
| L11 | 323.53' | N31°40'02"E |
| L12 | 274.00' | S74°15'29"W |
| L13 | 307.90' | N31°40'02"E |
| L14 | 60.00' | S85°49'32"W |
| L15 | 129.79' | N33°44'26"E |
| L16 | 72.79' | S85°49'31"W |
| L17 | 121.60' | N78°32'20"W |
| L18 | 243.22' | S31°40'02"W |
| L19 | 225.72' | S24°43'13"W |
| L20 | 299.12' | S31°40'02"W |

| LINE | LENGTH | BEARING |
|------|---------|-------------|
| L21 | 323.53' | S31°40'02"W |
| L22 | 359.90' | S32°11'16"W |
| L23 | 144.98' | N33°44'25"E |
| L24 | 183.60' | N31°10'05"E |
| L25 | 191.82' | N29°04'35"E |
| L26 | 81.25' | N35°22'58"E |
| L27 | 34.01' | N43°41'46"E |
| L28 | 165.58' | N86°46'52"E |
| L29 | 220.32' | N25°18'38"E |
| L30 | 316.22' | N55°55'54"W |
| L31 | 68.20' | S45°41'19"W |



GRID NORTH & BEARINGS SHOWN ARE IN REFERENCE TO NAD83 ALABAMA EAST ZONE STATE PLANE COORDINATES ESTABLISHED BY STATIC GPS, RTK, GPS AND CONVENTIONAL SURVEYING METHODS.



| LEGEND | |
|--------|---------------------------------------|
| | TREE |
| | NAIL |
| | CALCULATED POINT, NO PIN SET OR FOUND |
| | CONCRETE MONUMENT |
| | CONCRETE MONUMENT WITH DISC |
| | EXISTING IRON PIN |
| | FORTY CORNER |
| | RAILROAD SPIKE |
| | |
| | |
| | RAILROAD TRACKS |
| | LINE NOT TO SCALE |
| | FENCE LINE |
| | CENTER LINE |
| | POWER POLE |
| | OVERHEAD ELECTRIC LINE |

BATES PROPERTY
DEKALB COUNTY, ALABAMA

| JOB INFORMATION | |
|-----------------|----------------|
| DRAWN BY: | LWW |
| CHECKED BY: | LWW |
| FIELD NOTES: | 2014/05 PG. 55 |
| SURVEY CREW: | CP, AB, JC |
| SURVEY #: | S14-277 |
| S-T-R: | 7-9-8 & 12-9-7 |

LARRY WALKER
LAND SURVEYING, INC.

P.O. BOX 2726
5430 OLD HIGHWAY #278E
HOKES BLUFF, AL 35903
PHONE: (256)492-7940
FAX: (256)492-8417
EMAIL: LARRY.LWLS@GMAIL.COM